

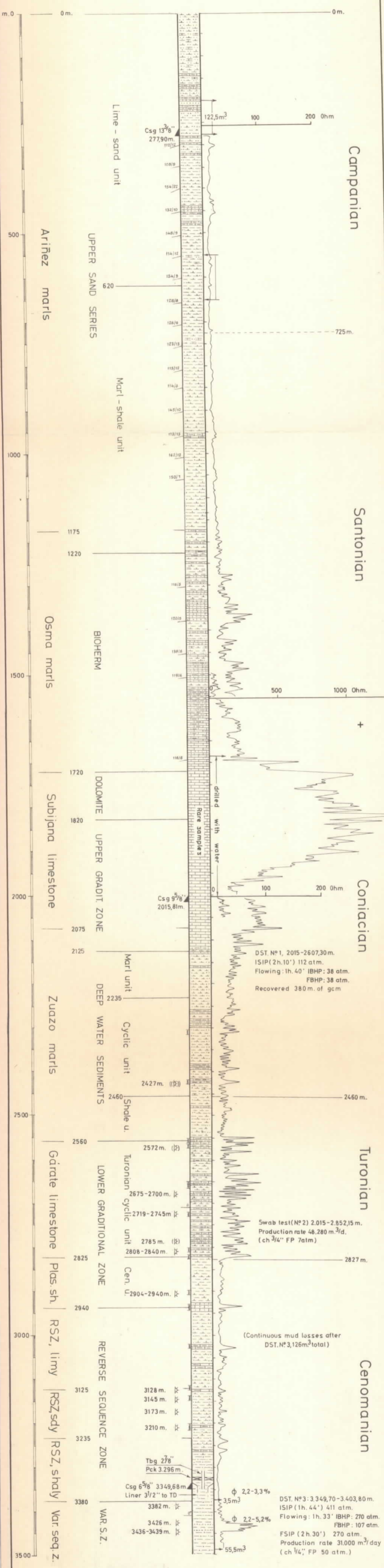
CASTILLO -2

22/3/1961 - 20/8/1961

42° 47' 06" N

1° 00' 47" E

759,01 m.a.s.l.



Total Depth 3498,05m.

Scale 1:5000

Interval perforated with 8 to 10 shots, 4" shaped charge, 5 shots/m. AT through perforations w/50 m³ CIH, 15'.